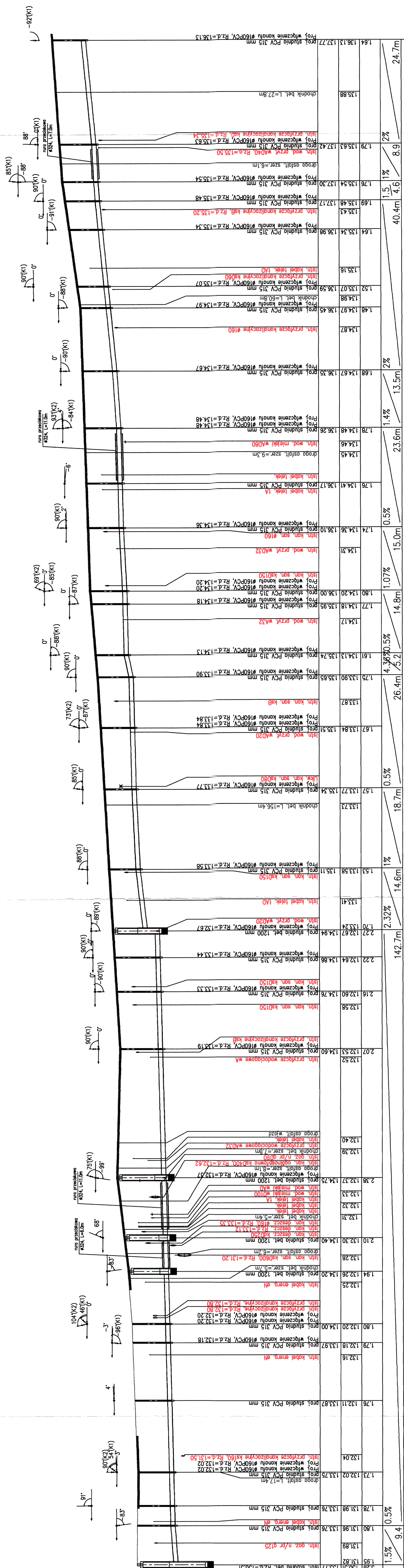


UWAGA:
 Nie wyklucza się istnienia niezidentyfikowanego
 uzbrojenia podziemnego. W przypadku odstępstw od
 przyjętych w projekcie danych, na etapie
 wykonawstwa, wprowadzić korekty na budowie w
 uzgodnieniu z projektantem i RWIK Białogard



STACJA	ODLEGŁOŚĆ	HEKTOMETRY	PROFIL KANALIZACJI SANITARNEJ - SIEĆ ODC. S11-S27
S11	0.0	0.0	
S12	5.2	9.4	
S13	4.7	14.1	
S14	8.1	22.2	
S15	8.1	30.3	
S16	17.2	47.5	
S17	26.1	73.6	
S18	39.4	113.0	
S19	50.4	163.4	
S20	53.3	216.7	
S21	57.8	274.5	
S22	57.8	332.3	
S23	50.4	382.7	
S24	39.4	422.1	
S25	22.2	444.3	
S26	8.1	452.4	
S27	0.0	452.4	
S28	8.9	461.3	
S29	4.6	465.9	
S30	4.3	470.2	
S31	13.6	483.8	
S32	15.0	498.8	
S33	15.0	513.8	
S34	13.5	527.3	
S35	13.6	540.9	
S36	10.5	551.4	
S37	15.0	566.4	
S38	15.0	581.4	
S39	14.8	596.2	
S40	5.2	601.4	
S41	5.2	606.6	
S42	14.4	621.0	
S43	18.5	639.5	
S44	18.8	658.3	
S45	6.4	664.7	
S46	8.1	672.8	
S47	13.7	686.5	
S48	12.9	699.4	
S49	31.0	730.4	
S50	78.5	808.9	
S51	74.3	883.2	
S52	67.8	950.0	
S53	12.6	962.6	
S54	17.2	979.8	
S55	22.2	1002.0	
S56	8.1	1010.1	
S57	4.7	1014.8	
S58	14.1	1028.9	
S59	8.9	1037.8	
S60	4.3	1042.1	
S61	4.3	1046.4	
S62	4.3	1050.7	
S63	4.3	1055.0	
S64	4.3	1059.3	
S65	4.3	1063.6	
S66	4.3	1067.9	
S67	4.3	1072.2	
S68	4.3	1076.5	
S69	4.3	1080.8	
S70	4.3	1085.1	
S71	4.3	1089.4	
S72	4.3	1093.7	
S73	4.3	1098.0	
S74	4.3	1102.3	
S75	4.3	1106.6	
S76	4.3	1110.9	
S77	4.3	1115.2	
S78	4.3	1119.5	
S79	4.3	1123.8	
S80	4.3	1128.1	
S81	4.3	1132.4	
S82	4.3	1136.7	
S83	4.3	1141.0	
S84	4.3	1145.3	
S85	4.3	1149.6	
S86	4.3	1153.9	
S87	4.3	1158.2	
S88	4.3	1162.5	
S89	4.3	1166.8	
S90	4.3	1171.1	
S91	4.3	1175.4	
S92	4.3	1179.7	
S93	4.3	1184.0	
S94	4.3	1188.3	
S95	4.3	1192.6	
S96	4.3	1196.9	
S97	4.3	1201.2	
S98	4.3	1205.5	
S99	4.3	1209.8	
S100	4.3	1214.1	
S101	4.3	1218.4	
S102	4.3	1222.7	
S103	4.3	1227.0	
S104	4.3	1231.3	
S105	4.3	1235.6	
S106	4.3	1239.9	
S107	4.3	1244.2	
S108	4.3	1248.5	
S109	4.3	1252.8	
S110	4.3	1257.1	
S111	4.3	1261.4	
S112	4.3	1265.7	
S113	4.3	1270.0	
S114	4.3	1274.3	
S115	4.3	1278.6	
S116	4.3	1282.9	
S117	4.3	1287.2	
S118	4.3	1291.5	
S119	4.3	1295.8	
S120	4.3	1300.1	
S121	4.3	1304.4	
S122	4.3	1308.7	
S123	4.3	1313.0	
S124	4.3	1317.3	
S125	4.3	1321.6	
S126	4.3	1325.9	
S127	4.3	1330.2	
S128	4.3	1334.5	
S129	4.3	1338.8	
S130	4.3	1343.1	
S131	4.3	1347.4	
S132	4.3	1351.7	
S133	4.3	1356.0	
S134	4.3	1360.3	
S135	4.3	1364.6	
S136	4.3	1368.9	
S137	4.3	1373.2	
S138	4.3	1377.5	
S139	4.3	1381.8	
S140	4.3	1386.1	
S141	4.3	1390.4	
S142	4.3	1394.7	
S143	4.3	1399.0	
S144	4.3	1403.3	
S145	4.3	1407.6	
S146	4.3	1411.9	
S147	4.3	1416.2	
S148	4.3	1420.5	
S149	4.3	1424.8	
S150	4.3	1429.1	
S151	4.3	1433.4	
S152	4.3	1437.7	
S153	4.3	1442.0	
S154	4.3	1446.3	
S155	4.3	1450.6	
S156	4.3	1454.9	
S157	4.3	1459.2	
S158	4.3	1463.5	
S159	4.3	1467.8	
S160	4.3	1472.1	
S161	4.3	1476.4	
S162	4.3	1480.7	
S163	4.3	1485.0	
S164	4.3	1489.3	
S165	4.3	1493.6	
S166	4.3	1497.9	
S167	4.3	1502.2	
S168	4.3	1506.5	
S169	4.3	1510.8	
S170	4.3	1515.1	
S171	4.3	1519.4	
S172	4.3	1523.7	
S173	4.3	1528.0	
S174	4.3	1532.3	
S175	4.3	1536.6	
S176	4.3	1540.9	
S177	4.3	1545.2	
S178	4.3	1549.5	
S179	4.3	1553.8	
S180	4.3	1558.1	
S181	4.3	1562.4	
S182	4.3	1566.7	
S183	4.3	1571.0	
S184	4.3	1575.3	
S185	4.3	1579.6	
S186	4.3	1583.9	
S187	4.3	1588.2	
S188	4.3	1592.5	
S189	4.3	1596.8	
S190	4.3	1601.1	
S191	4.3	1605.4	
S192	4.3	1609.7	
S193	4.3	1614.0	
S194	4.3	1618.3	
S195	4.3	1622.6	
S196	4.3	1626.9	
S197	4.3	1631.2	
S198	4.3	1635.5	
S199	4.3	1639.8	
S200	4.3	1644.1	
S201	4.3	1648.4	
S202	4.3	1652.7	
S203	4.3	1657.0	
S204	4.3	1661.3	
S205	4.3	1665.6	
S206	4.3	1670.0	
S207	4.3	1674.3	
S208	4.3	1678.6	
S209	4.3	1682.9	
S210	4.3	1687.2	
S211	4.3	1691.5	
S212	4.3	1695.8	
S213	4.3	1700.1	
S214	4.3	1704.4	
S215	4.3	1708.7	
S216	4.3	1713.0	
S217	4.3	1717.3	
S218	4.3	1721.6	
S219	4.3	1725.9	
S220	4.3	1730.2	
S221	4.3	1734.5	
S222	4.3	1738.8	
S223	4.3	1743.1	
S224	4.3	1747.4	
S225	4.3	1751.7	
S226	4.3	1756.0	
S227	4.3	1760.3	
S228	4.3	1764.6	
S229	4.3	1768.9	
S230	4.3	1773.2	
S231	4.3	1777.5	
S232	4.3	1781.8	
S233	4.3	1786.1	
S234	4.3	1790.4	
S235	4.3	1794.7	
S236	4.3	1799.0	
S237	4.3	1803.3	
S238	4.3	1807.6	
S239	4.3	1811.9	
S240	4.3	1816.2	
S241	4.3	1820.5	
S242	4.3	1824.8	
S243	4.3	1829.1	
S244	4.3	1833.4	
S245	4.3	1837.7	
S246	4.3	1842.0	
S247	4.3	1846.3	
S248	4.3	1850.6	
S249	4.3	1854.9	
S250	4.3	1859.2	
S251	4.3	1863.5	
S252	4.3	1867.8	
S253	4.3	1872.1	
S254	4.3	1876.4	
S255	4.3	1880.7	
S256	4.3	1885.0	
S257	4.3	1889.3	
S258	4.3	1893.6	
S259	4.3	1897.9	
S260	4.3	1902.2	
S261	4.3	1906.5	
S262	4.3	1910.8	
S263	4.3	1915.1	
S264	4.3	1919.4	
S265	4.3	1923.7	
S266	4.3	1928.0	
S267	4.3	1932.3	
S268	4.3	1936.6	
S269	4.3	1940.9	
S270	4.3	1945.2	
S271	4.3	1949.5	
S272	4.3	1953.8	
S273	4.3	1958.1	
S274	4.3	1962.4	
S275	4.3	1966.7	
S276	4.3	1971.0	
S277	4.3	1975.3	
S278	4.3	1979.6	
S279	4.3	1983.9	
S280	4.3	1988.2	
S281	4.3	1992.5	
S282	4.3	1996.8	
S283	4.3	2001.1	
S284	4.3	2005.4	
S285	4.3	2009.7	
S286	4.3	2014.0	
S287	4.3	2018.3	
S288	4.3	2022.6	
S289	4.3	2026.9	
S290	4.3	2031.2	
S291	4.3	2035.5	
S292	4.3	2039.8	
S293	4.3	2044.1	
S294	4.3	2048.4	
S295	4.3	2052.7	
S296</			